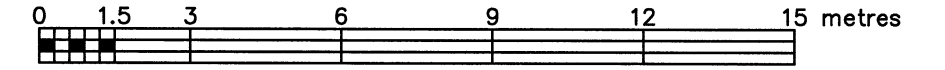


TOPOGRAPHIC PLAN OF SURVEY OF

PART OF LOTS 20 AND 21  
BLOCK 18  
REGISTERED PLAN 42  
CITY OF OTTAWA

FARLEY, SMITH & DENIS SURVEYING LTD. 2018

Scale 1: 150



Metric Note

Distances and coordinates on this plan are in metres and can be converted to feet by dividing by 0.3048.

Distance Note

Distances shown on this plan are ground distances and can be converted to grid distances by multiplying by the combined scale factor of 0.99996.

Bearing Note

Bearings are grid, are derived from the southerly limit of Crichton Street having a bearing of N 67° 00' 30" W as shown on Plan 4R-28362 and are referred to the Central Meridian of MTM Zone 9 (76°30' West Longitude) Nad-83 (Original).

Elevation Notes

- Elevations shown are geodetic and are referred to Geodetic Datum CGVD-1928 :1978.
- Elevations derived from Local Benchmark being the Top of Foundation at No. 205 Crichton Street (FSD File No. 518-11) having a published elevation of 57.87m.
- It is the responsibility of the user of this information to verify that the job benchmark has not been altered or disturbed and that its relative elevation and description agrees with the information shown on this drawing.

Utility Notes

- This drawing cannot be accepted as acknowledging all of the utilities and it will be the responsibility of the user to contact the respective utility authorities for confirmation.
- Only visible surface utilities were located.
- Underground utility data derived from City of Ottawa utility sheet reference: C-15-12 and drawings No.2055 (Sheets 3 & 4 of 7) and 7949.
- Sanitary and storm sewer grades and inverts were derived from field measurement.
- A field location of underground plant by the pertinent utility authority is mandatory before any work involving breaking ground, probing, excavating etc.

Notes & Legend

|  |         |  |
|--|---------|--|
|  | Denotes | Survey Monument Planted                              |
|  | "       | Survey Monument Found                                |
|  | "       | Standard Iron Bar                                    |
|  | "       | Short Standard Iron Bar                              |
|  | "       | Iron Bar   |
|  | "       | Round Iron Bar                                       |
|  | "       | Cut Cross  |
|  | "       | Concrete Pin   |
|  | "       | Witness  |
|  | "       | Measured   |
|  | "       | Registered Plan 42                                   |
|  | "       | Plan 4R-28362  |
|  | "       | Plan by (990) dated Feb.2, 1994                      |
|  | "       | Plan by (671) dated Dec.2, 1969 (Ref. No. OT-70-2)   |
|  | "       | Plan by (1692) dated April 27, 2016 (File No. 16-15) |
|  | "       | Foundation   |
|  | "       | Flt  |
|  | "       | Flashing   |
|  | "       | Underside of Eave                                    |
|  | "       | Maintenance Hole (Storm)                             |
|  | "       | Maintenance Hole (Sanitary)                          |
|  | "       | Valve Chamber (Watermain)                            |
|  | "       | Underground Storm Sewer                              |
|  | "       | Underground Sanitary Sewer                           |
|  | "       | Underground Water                                    |
|  | "       | Overhead Wires                                       |
|  | "       | Fire Hydrant   |
|  | "       | Invert   |
|  | "       | Top of Grate   |
|  | "       | Diameter   |
|  | "       | Chain Link Fence                                     |
|  | "       | Board Fence  |
|  | "       | Cedar Hedge  |
|  | "       | Centreline   |
|  | "       | Concrete Retaining Wall                              |
|  | "       | Location of Elevations                               |
|  | "       | Top of Concrete Curb/Wall Elevation                  |
|  | "       | Property Line  |
|  | "       | Deciduous Tree                                       |
|  | "       | Coniferous Tree                                      |

ASSOCIATION OF ONTARIO  
LAND SURVEYORS  
PLAN SUBMISSION FORM  
2062408

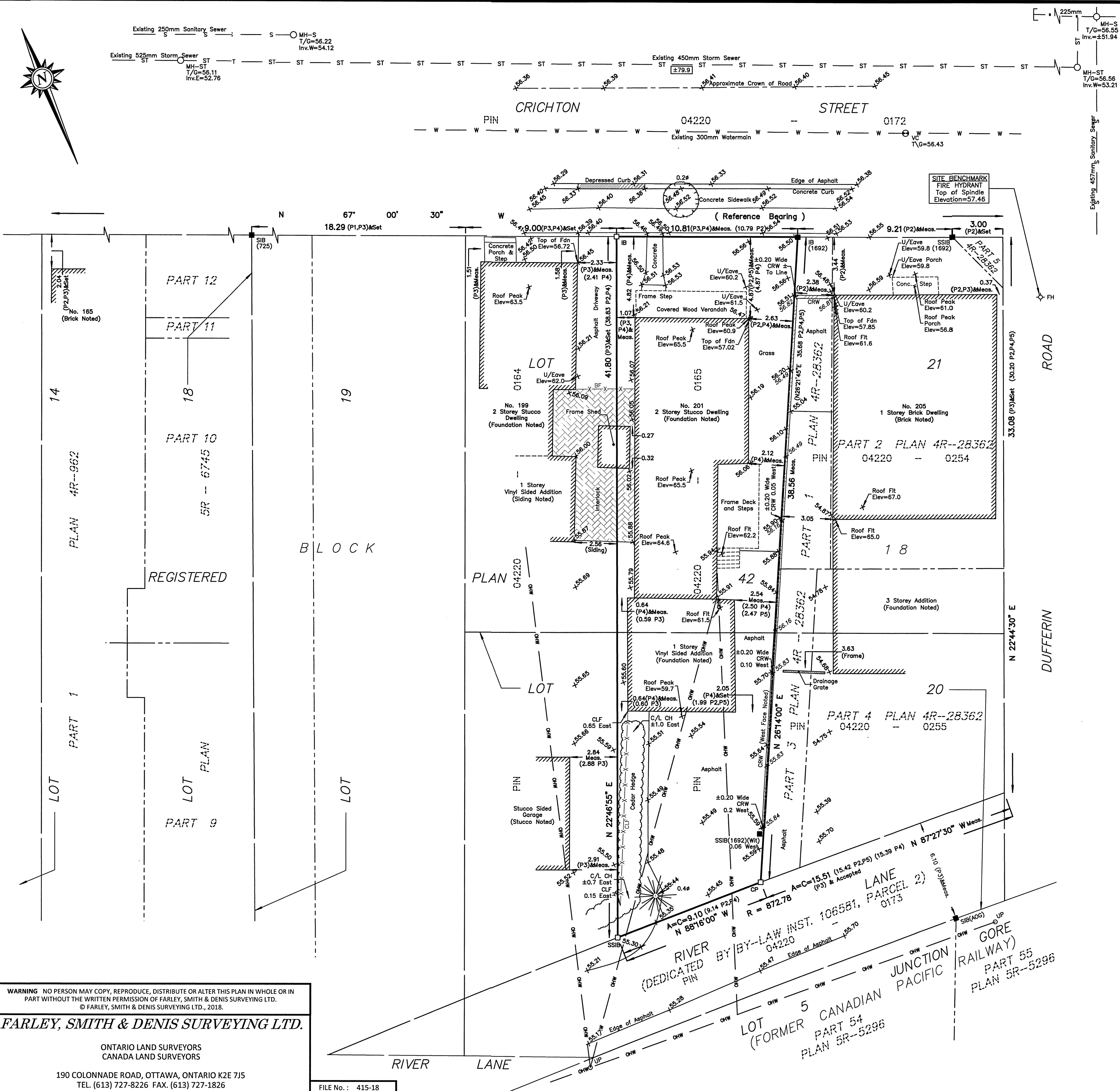
THIS PLAN IS NOT VALID UNLESS  
IT IS AN EMBOSSED ORIGINAL COPY  
ISSUED BY THE SURVEYOR  
In accordance with  
Regulation 1026, Section 29 (3).

Surveyor's Certificate

I certify that:

- This survey and plan are correct and in accordance with the Surveys Act, the Surveyors Act and the Regulations made under them.
- The survey was completed on the 5th day of September, 2018.

Sept 6/18 Date  
  
 Jamie Leslie  
 Ontario Land Surveyor



**WARNING** NO PERSON MAY COPY, REPRODUCE, DISTRIBUTE OR ALTER THIS PLAN IN WHOLE OR IN PART WITHOUT THE WRITTEN PERMISSION OF FARLEY, SMITH & DENIS SURVEYING LTD.  
© FARLEY, SMITH & DENIS SURVEYING LTD., 2018.

**FARLEY, SMITH & DENIS SURVEYING LTD.**

ONTARIO LAND SURVEYORS  
CANADA LAND SURVEYORS

190 COLONNADE ROAD, OTTAWA, ONTARIO K2E 7J5  
TEL. (613) 727-8226 FAX. (613) 727-1826

FILE No.: 415-18